

Sindh Economic Zones Management Company

presents



MARBLE CITY KARACHI

A state-of-the-art industrial estate spread over 300 acres on the northern bypass to uplift the dimension stone and allied industrial clusters.

A SECTOR WITH IMMENSE POTENTIAL

Pakistan is blessed with a variety of rare and precious marble and mineral resources and stands out as a unique country, which offers immense opportunities for domestic and international investors to earn maximum returns on their investments in this vital sector.

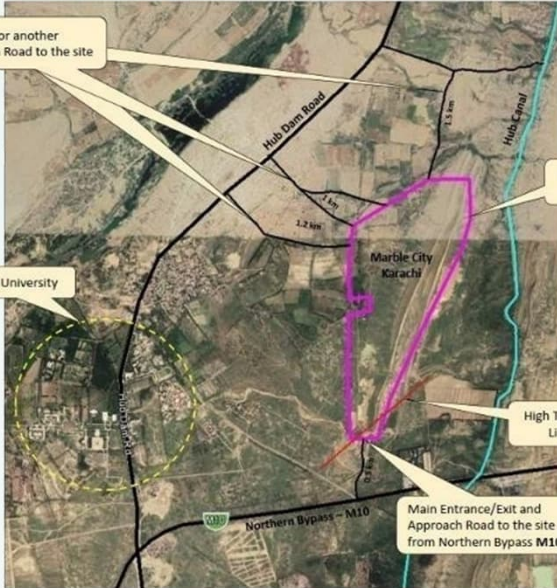
With TDAP estimates of 300 billion tons of marble reserves, the potential in the sector is immense for not only domestic use but also for export to other countries.

PROJECT BACKGROUND

With the increase in construction activity throughout the country, SEZMC has launched Marble City Karachi to be built under Public Private Partnership as a Design, Build, Finance, Operate & Maintain, and Transfer project.

The project will offer the requisite modern infrastructure, utilities at doorstep and easy access to the ports of Karachi and road network to allow zone enterprises to add value in the sector and provide better solutions to domestic and international customers.

MARBLE CITY KARACHI



LOCATION ADVANTAGES

- ▶ Located within Karachi, the largest metropolitan
- ▶ Close proximity to new housing developments in the city
- ▶ Connected through Karachi's Largest Roads Network
- ▶ Distance to Ports and Highways:
 - ▶ 40 km to Karachi Port.
 - ▶ 60 km to Port Qasim
 - ▶ 25 km to Khi-Hyd Motorway
 - ▶ 1.2 km to Karachi Northern Bypass
 - ▶ 24 km to RCD highway Balochistan

TRANSACTION STRUCTURE

The project is structured on a DBFOT model where the development of land will be funded and carried out by the concessionaire.

The financing of the project construction works shall be raised through sponsor's equity and customer advances from the sub-lease of industrial and commercial plots.

The project is based on a revenue sharing model where the concessionaire will share revenue from the sale of plots with SEZMC.

The bidder shall be hired through a competitive bidding process where the technically qualified bidder quoting the highest revenue share (in PV terms) shall be considered as the preferred bidder.

PROJECT AMENITIES

- ▶ Common Machinery Pool
- ▶ Weigh Bridges
- ▶ Truck Stands
- ▶ Training and Exhibition Centers
- ▶ Build Marts
- ▶ Mosque
- ▶ Clinic
- ▶ Check Posts
- ▶ Watch Towers